

## Features

- ◇ For the application of big area grapping and heavy load handling.
- ◇ Can be equipped with built-in vacuum generator or external blower.
- ◇ Equipped with large vacuum flow generator, short response time.
- ◇ Built-in non-return valve, suitable for workpieces of different sizes.
- ◇ Sponge and suction cup for selection.
- ◇ Mainly used in sorting system for stacking and unstacking.



## Application

- ◇ Intelligent warehousing
- ◇ Sorting
- ◇ Stacking and unstacking
- ◇ Logistics

## How to order

TXH    500×700   -   A   -   C   -   V  
           ①            ②            ③            ④            ⑤

① Series	② Dimensions	③ Adsorbing surface type	④ Vacuum source	⑤ Non-return valve
TXH	500 × 700 800×1000 1100×1300	A - Sponge type B40 - Default (suction cup model: SPC40S)	Nil - Default C - vacuum pump ( for 500x700 type only )	Nil - Without non- return valve V - With non- return valve

## Selection

Model/Size	A	B40	C	V
TXH500 × 700	●	○	○	●
TXH800 × 1000	●	○	-	●
TXH1100 × 1300	●	○	-	●

◇ Note: “●” - default, in stock. “○” - selective, no stock. “-” - unavailable.

## Features

- ◇ Applicable for packaging logistic industry, box handling, unstacking and stacking. High quality sponge provides good fitting for uneven surface products, long lifetime, good sealing performance, etc. With one-way valve internal and external blower, equipped with reversing valve control unit for blower, also equipped vacuum detection switch and proximity switch, very convenient for automatically control.



## Technical parameters

Hose dia.of blower	Theoretical Max. suction force (N)(-40 kPa)	Recommend blower flow (m³/h)	Working voltage of control unit	Reversing valve of blower	Bracket	Detection device	Weight (kg)
φ 60	1,440	170	DC24V	With	Without	Mechanical pressure gauge 1pc Digital vacuum switch 1pc Photoelectric switch 1pc	34.5

◇Note: The data of suction force as above are figured out in the condition that the vacuum gripper is full covered by a rigid airtight workpiece,and without including safety factor.

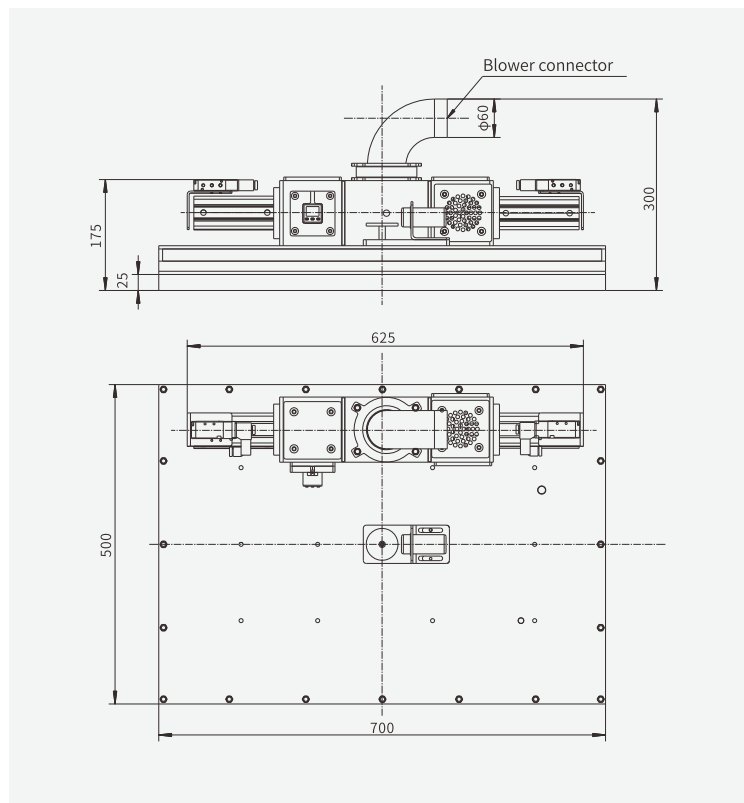
## Dimensions(mm)

### Sponge type

Model	Model of sponge	Sponge size
TXH500×700	TXH500	500×700×25

### Suction cup type

Model	Model of Suction cup	Diameter (mm)
TXH500×700	SPC40S	φ 40



## Features

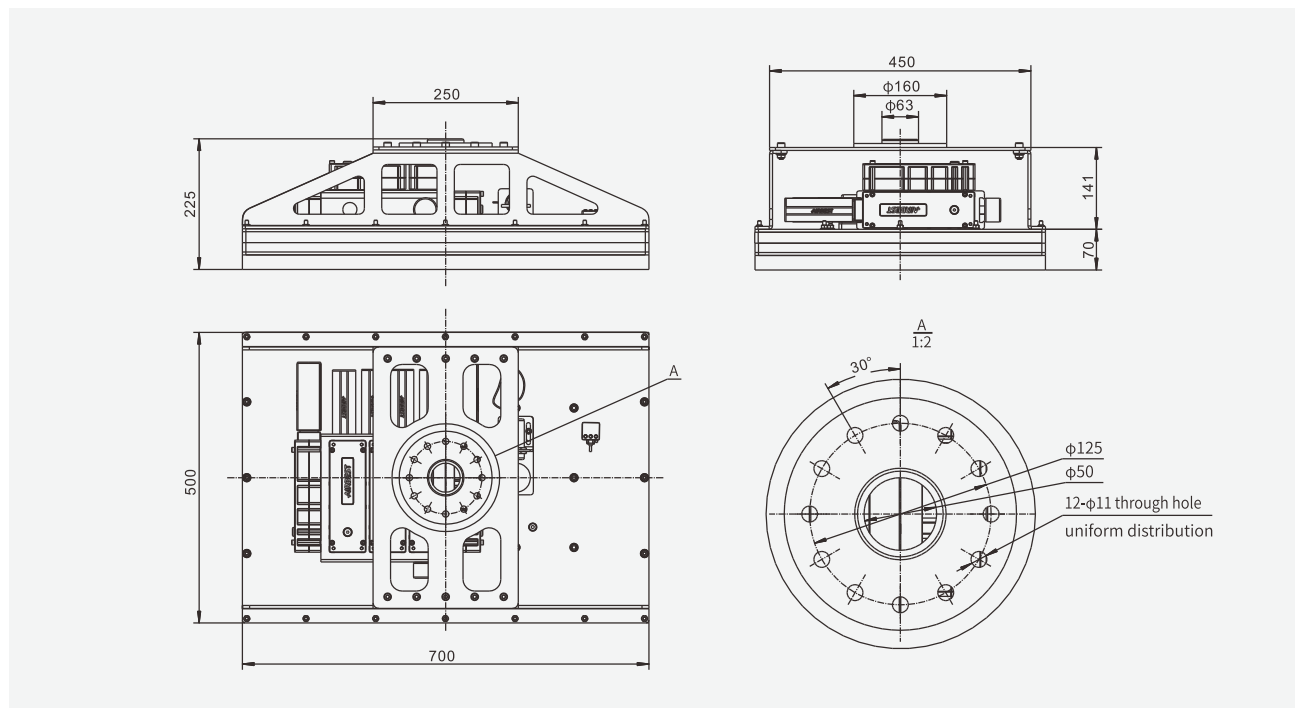
- ◇ For the application of big area grapping and heavy load handling.
- ◇ Can be equipped with built-in generator or external blower.
- ◇ Equipped with large vacuum flow generator, short response time.
- ◇ Built-in non-return valve, suitable for workpieces of different sizes.
- ◇ Sponge and suction cup for selection.
- ◇ Mainly used in sorting system for stacking and unstacking.



## Technical parameters

Air supply pressure (bar)	Air consumption (NL/min)	Max. vacuum level (- kPa)	Max. vacuum flow (NL/min)	Theoretical Max. suction force (N) (-40 kPa)	Bracket	Detection device	Weight (kg)
6.0	2,300	85	3,710	1,440	With	Mechanical pressure gauge 1pc Digital vacuum switch 1pc Photoelectric switch 1pc	36.5

## Dimensions (mm)



### Sponge type

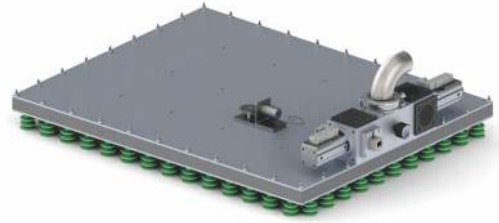
Model	Model of sponge	Sponge size
TXH500×700	TXH500	500×700×25

### Suction cup type

Model	Model of Suction cup	Diameter
TXH500×700	SPC40S	Φ40

## Features

◇Applicable for packaging logistic industry, a whole layer handling, unstacking and stacking. High quality sponge provides good fitting for uneven surface products, long lifetime, good sealing performance, etc. With one-way valve internal and external blower, equipped with reversing valve control unit for blower, also equipped vacuum detection switch and proximity switch, very convenient for automatically control.



## Technical parameters

Model	Theoretical Max. suction force (N)(-40 kPa)	Recommend blower flow (m³/h)	Working voltage of control unit	Reversing valve of blower	Bracket	Detection device	Weight (kg)
TXH800×1000-B40-V	3,850	320	DC24V	With	Without	Mechanical pressure gauge 1pc Digital vacuum switch 1pc Photoelectric switch 1pc	56
TXH1100×1300-B40-V	5,200	520	DC24V	With	Without	Mechanical pressure gauge 1pc Digital vacuum switch 1pc Photoelectric switch 1pc	79

## Dimensions(mm)

Model/Size	W	L
TXH800×1000-B40-V	800	1,000
TXH1100×1300-B40-V	1,100	1,300

### Sponge type

Model	Model of sponge	Sponge size
TXH800×1000	TXH800	800×1000×25
TXH1100×1300	TXH1100	1100×1300×25

### Suction cup type

Model	Model of Suction cup	Diameter (mm)
TXH800×1000	SPC40S	φ 40
TXH1100×1300	SPC40S	φ 40

